



CITY OF COOS BAY ZONING MAP

BASE ZONES

- LDR-8.5 LOW DENSITY RESIDENTIAL - 8.5
- LDR-6 LOW DENSITY RESIDENTIAL - 6
- MDR-16 MEDIUM DENSITY RESIDENTIAL
- MP MEDICAL PARK
- MX MIXED USE
- C COMMERCIAL
- I-C INDUSTRIAL/COMMERCIAL
- HP HOLLERING PLACE
- W-H WATERFRONT HERITAGE
- W-I WATERFRONT INDUSTRIAL
- TL TRUST LAND
- UP URBAN PUBLIC
- W WATERSHED

OVERLAY ZONES

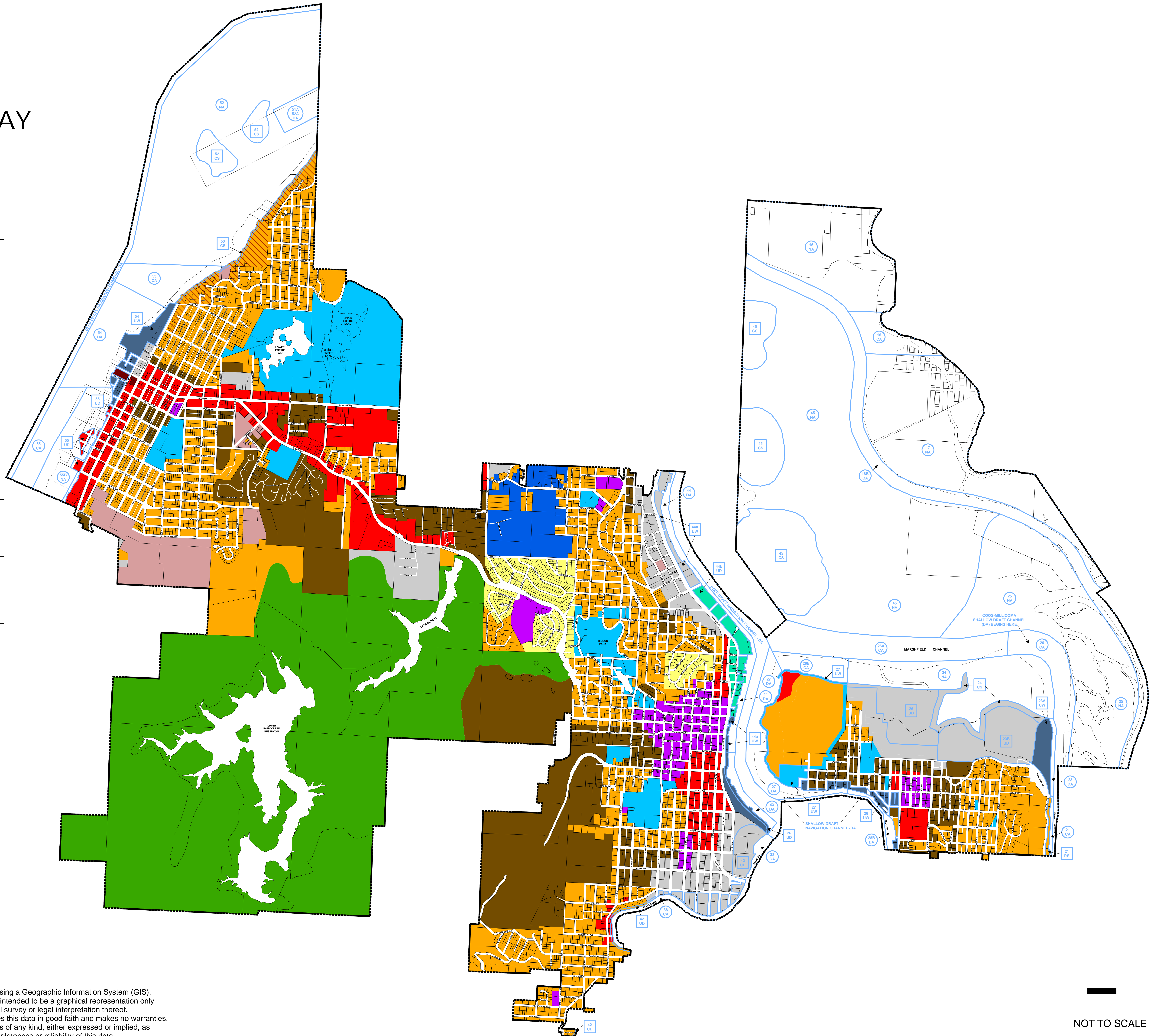
- LDR-6

COOS BAY ESTUARY MANAGEMENT PLAN

- SHORELAND OR UPLAND UNIT DESIGNATION
- AQUATIC UNIT DESIGNATION

LEGEND

- COOS BAY CITY LIMITS



Disclaimer:

This document is produced using a Geographic Information System (GIS). The data contained herein is intended to be a graphical representation only and is by no means an official survey or legal interpretation thereof. The City of Coos Bay provides this data in good faith and makes no warranties, guarantees or representations of any kind, either expressed or implied, as to the content, accuracy, completeness or reliability of this data.

ADOPTED 3/18/2016

NOT TO SCALE